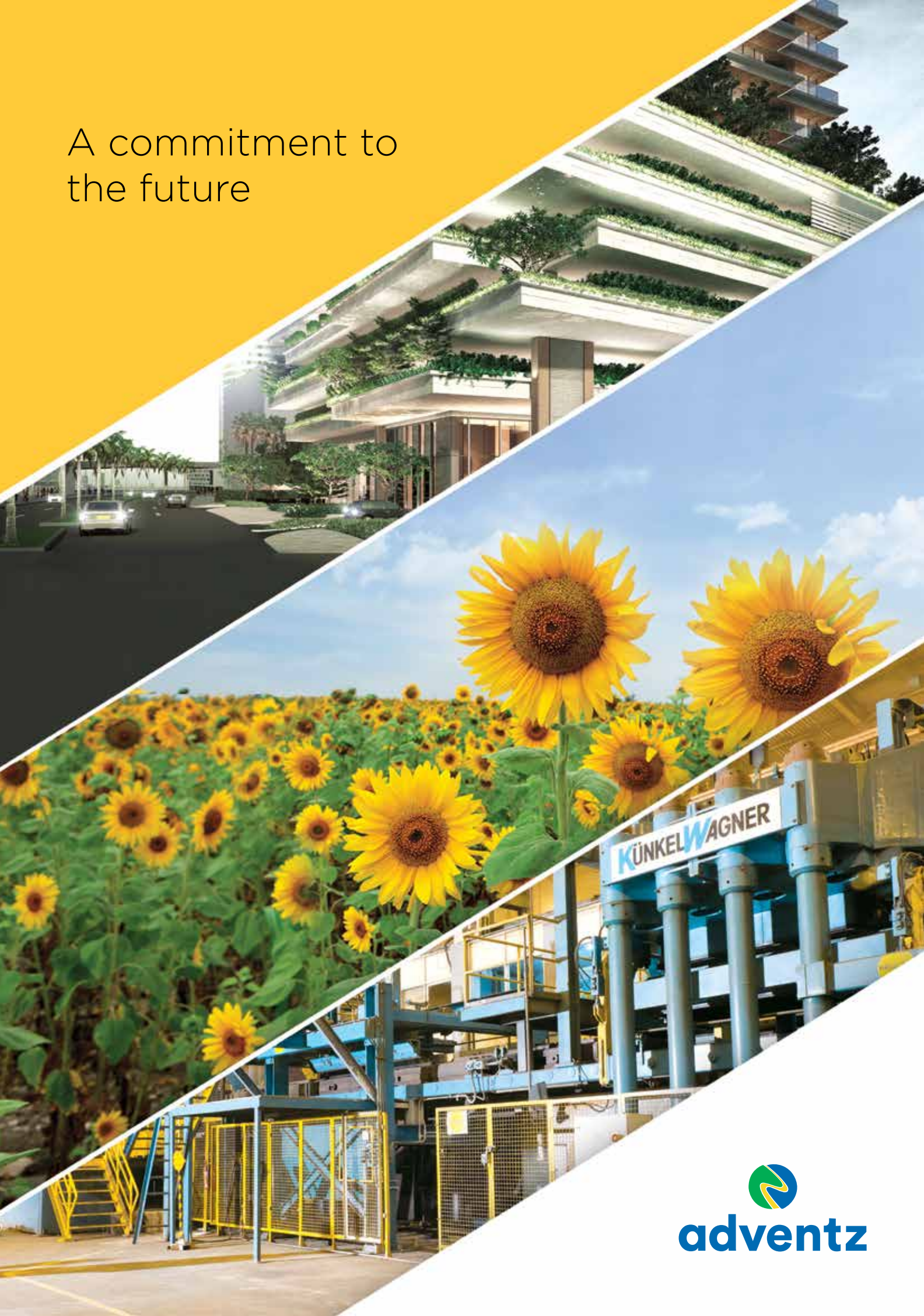
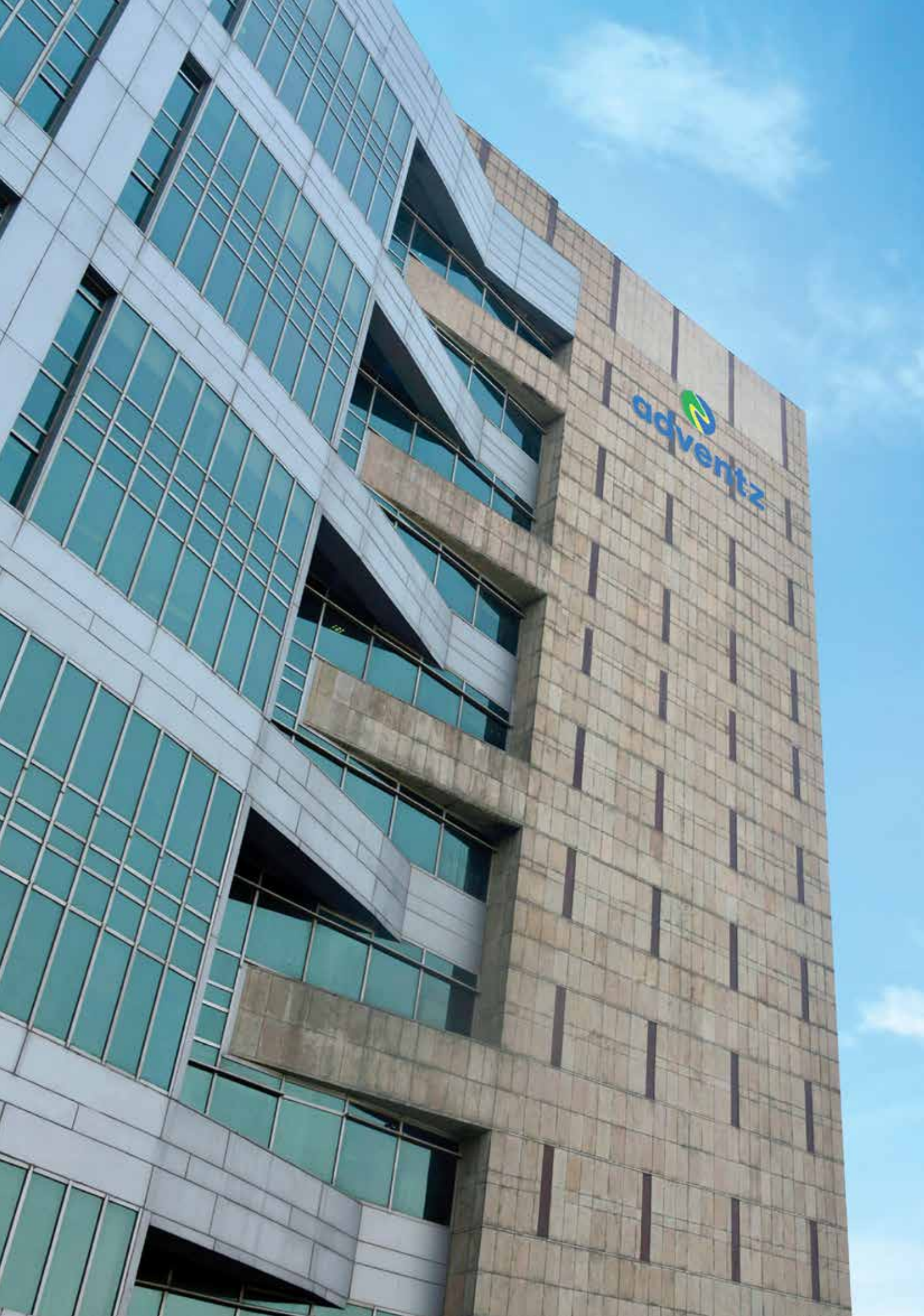


A commitment to
the future





 adventz

Adventz Group

A diversified multi-business conglomerate, the Group is led by leading industrialist, Mr. Saroj Kumar Poddar and includes premier companies operating in multiple areas, representing the fundamental drivers of the Indian economy such as agri inputs, heavy engineering, lifestyle products, real estate and infrastructure. The valuable equities of each of these companies are making a synergistic and transformational impact in the Indian business scenario. The Adventz Group represents a fantastic synthesis of human talent, proven technological expertise and established financial prowess across sectors.

Our Vision

To be a globally recognized conglomerate having strategic position in all its segments, achieving business excellence and creating value for stakeholders.

Our Values



AGILITY



CUSTOMER FIRST



INTEGRITY



SUSTAINABILITY

Achieving the Global Edge

A little more than five years ago, we undertook our first tentative steps towards projecting a cohesive identity by repositioning our group under a unified banner, namely 'Adventz'.

We committed ourselves towards effecting genuine progress in our areas of operations by leveraging the power of the Group's enormous diversity, its impeccable lineage and legacy, its huge reservoirs of human talent and skills, its vast pools of knowledge, technological know-how and best practices.

After five exciting, eventful and action-packed years, we have indeed come a long way in consolidating and transforming our existing businesses to create enhanced currency and vibrancy in their respective operations.

We have also forged ahead in creating multi-directional new ventures and collaborations. We have expanded our horizons to embrace the lifestyle space with a major push into consumer facing new business verticals such as Real Estate, RTA furniture and e-commerce. Most importantly, we have striven to give a never before global thrust to our enterprise.

We realized early on that going global is critical to our long-term growth strategy of expanding rapidly in areas where we have significant market share. These are, primarily, engineering and infrastructure, fertilisers, agro chemicals and seeds.

These are our growth areas and we are investing significantly to forge global partnerships and collaborations to lend international sophistication to our products and services.

The Group is firmly focussed on the agri-sector which is a key infrastructural sector contributing vitally to the overall economic development of the country. The Group considers that its fertiliser business is a core area for growth. Our market reach has increased significantly with the acquisition of Mangalore Chemicals and Fertilisers Limited (MCFL) and its port based location has helped us to handle traded

fertilisers much more efficiently. Group major Zuari Agro is rapidly improving last mile connectivity to farmers by significantly increasing its retail outreach with over one hundred, 'Jai Kisaan Junction' stores which provide a host of products and services to farmers. The company is also pursuing backward integration worldwide to become a sourcing powerhouse by securing assets and long-term supply contracts to double volumes in the marketplace. We are also actively looking to create manufacturing bases overseas to enhance our portfolio.

Engineering major, Texmaco Rail, has also made massive new investments with several acquisitions in India as well as joint ventures and partnerships with international majors to expand its portfolio of sophisticated products and services.

Texmaco Rail is well positioned to take advantage of the country's rapidly developing infrastructural space and the expanding export market for coaches, freight wagons and fabricated loco parts and other equipment.

Today, some of the most renowned names in international business are our collaborators and partner many of our new-age ventures including giants such as Wabtec, USA, Mitsubishi and Hitachi of Japan, OCP of Morocco, Hettich of Germany and many more.

With the dawn of an era of improved governance in our country, "Make In India" for the world is the robust new mantra. We are positioning our group to take advantage of the enormous and exciting opportunities which are being thrown up.

I am confident that the Adventz Group is on its way to becoming a *force majeure* in global industry.

Saroj Kumar Poddar
Chairman, Adventz Group



Adventz Today

The Adventz Group spreads, pan India as one of India's largest and most diversified manufacturing and life style conglomerates, with significant presence in agri business, engineering, infrastructure, real estate and consumer durables which are the key drivers of the Indian economy. Led by front ranking industrialist, Mr. Saroj Kumar Poddar, the Group is partnered by world leaders in various areas of enterprise. It has nine major manufacturing locations throughout the country and boasts of a cosmopolitan employee force of over 10000 committed individuals representing a resplendent diversity of skills, knowledge, provenance, backgrounds and gender.

Created over five years ago by the coming together of some of India's most renowned companies such as the Zuari and Texmaco Groups which were repositioned under the Adventz banner by Mr. Poddar to leverage their exemplary equity, in terms of technical excellence and best practices, the Group has consolidated, and transformed existing businesses and forged ahead in new directions





promoting several seminal projects including critical acquisitions, partnerships and joint ventures with leading international corporations. The most notable of these ventures are Hettich India Private Ltd. – a joint venture with the Hettich Group of Germany, Texmaco Hi-tech Private Ltd, MCA Phosphates Pte Ltd. – a joint venture with Mitsubishi Corporation, Japan and Wabtec Texmaco Rail Pvt. Ltd., a joint venture with Wabtec, USA. The Group also has a joint venture for leasing of railway wagons with Touax, France. At Mr Poddar's initiative the Group has recently acquired Kalindee Rail Nirman (Engineers) Ltd., as well as Bright Power Ltd. which offer synergistic strengths to its core railway products business and enable it to offer complete EPC solutions including track-laying, signaling and electrification solutions to railways. The Group has also signed definitive agreements to set up a one million tonne integrated phosphatic fertiliser complex in the UAE with GCC partners.



The Group today, is a major producer of a wide range of high-quality complex fertilisers and other agricultural inputs such as seeds, pesticides, micronutrients and speciality fertilisers. State-of-the-art, new generation, freight wagons, rail coaches and hydro-mechanical equipment is another major vertical and it is the largest manufacturer of these in the private sector. The Group has engineering expertise and offers technical consultancy, project management and contracting services to chemical, fertiliser, oil & gas, petrochemical, power and other infrastructure projects. The Group has ventured into real estate and aims to create world-class yet affordable homes and office spaces. In the consumer durables segment, the Group manufactures state-of-the-art, RTA furniture and has a complete range of fittings and hardware to cater to all the three segments of furniture manufacturing; i.e. office, residential and kitchen & bath. It operates the largest retail furniture chain in India.

The Group's investment profile has been remarkable indeed in the last five years of its existence, with fresh investments





Adventz is a dynamic conglomerate made of India's premier companies in the Agri Business, Engineering, Real Estate, Infrastructure & Lifestyle sectors.

of over US \$400 million, primarily in derisking existing core businesses and lending fresh currency and vibrancy to their operations. These include major investments in backward integration, modernising and expanding capacities at Zuari Agro, Paradeep Phosphates and Gobind Sugar Mills, adding sophisticated new product lines at Texmaco including EMU Coaches, Locomotives and advanced components for the railways, Hettich India's new factories at Baroda and in real estate at Dubai, Goa, Vrindavan and Mysore. The new 'Adventz Tower' project in high end down town Dubai, adjoining the land mark Burj Khalifa, promises to be an iconic residential development.

The Adventz Group considers contributing to social progress and stability of primary importance and through the 'Adventz Foundation', has undertaken numerous CSR initiatives in recent times towards the welfare and uplift of the larger community in its areas of operation.

Our Culture

Adventz is 100% people driven.

Adventz believes in the transformative power of people. To harness this power, we have built an environment and created a culture that encourages continuous growth and learning. Across the Group, numerous in-house training programmes conducted by senior managers and industry leaders go a long way in unlocking hidden talent.

Adventz offers a world of opportunity for employees to perform to their true potential through cross-industry experiences that equip them to meet any challenge. Adventz is 100% people-driven. We believe that our people are the magic ingredient that will drive Adventz to become the force of the future.



Our Footprint

Adventz is a dynamic, diversified conglomerate. We reach out and touch millions through our products manufactured in state-of-the-art facilities.



PLANTS

- ◆ Zuari Agro, Goa
- ◆ Zuari Fertilisers & Chemicals, Mahad, Maharashtra
- ◆ Zuari Speciality Fertilisers, Maharashtra
- ◆ Zuari Agri Sciences, Andhra Pradesh
- ◆ Texmaco Rail, West Bengal
- ◆ Paradeep Phosphates, Orissa
- ◆ Mangalore Chemicals & Fertilisers, Karnataka
- ◆ Hettich India, Baroda
- ◆ Indian Furniture Products, Tamil Nadu
- ◆ Zuari Agri Park, Solapur, Maharashtra
- ◆ Gobind Sugar Mills, UP

CORPORATE OFFICE

- Gurgaon





Agri Business

Adventz is powering the critical transformation in the Indian agricultural sector by leveraging the vast experience and expertise of its group companies that operate in this sector. Our group companies are engaging with the farming community to initiate and sustain innovative market development and grass-roots level farmer education & training.

Bulk Fertilisers • Speciality Fertilisers • Pesticides • Hybrid Seeds • Retail • Sugar



Agri Business

Setting the pace towards last mile connectivity with farmers, Adventz has packaged its services for all farmer requirements, from advisory and demo services to improved seeds, pesticides and nutrient enriched fertilisers.



Adventz today, encompasses one of India's largest fertiliser conglomerates through a highly integrated set up led by Zuari Agro Chemicals, with five major manufacturing locations at Goa, Mangalore, Paradeep, Baramati and Mahad. With over three million tonnes of manufacture and over a million tonnes of imports annually,

Agri Business - Key Highlights

AGRI BUSINESS

Fertilisers, Farm Nutrients

Seeds

Crop Protection
Chemicals

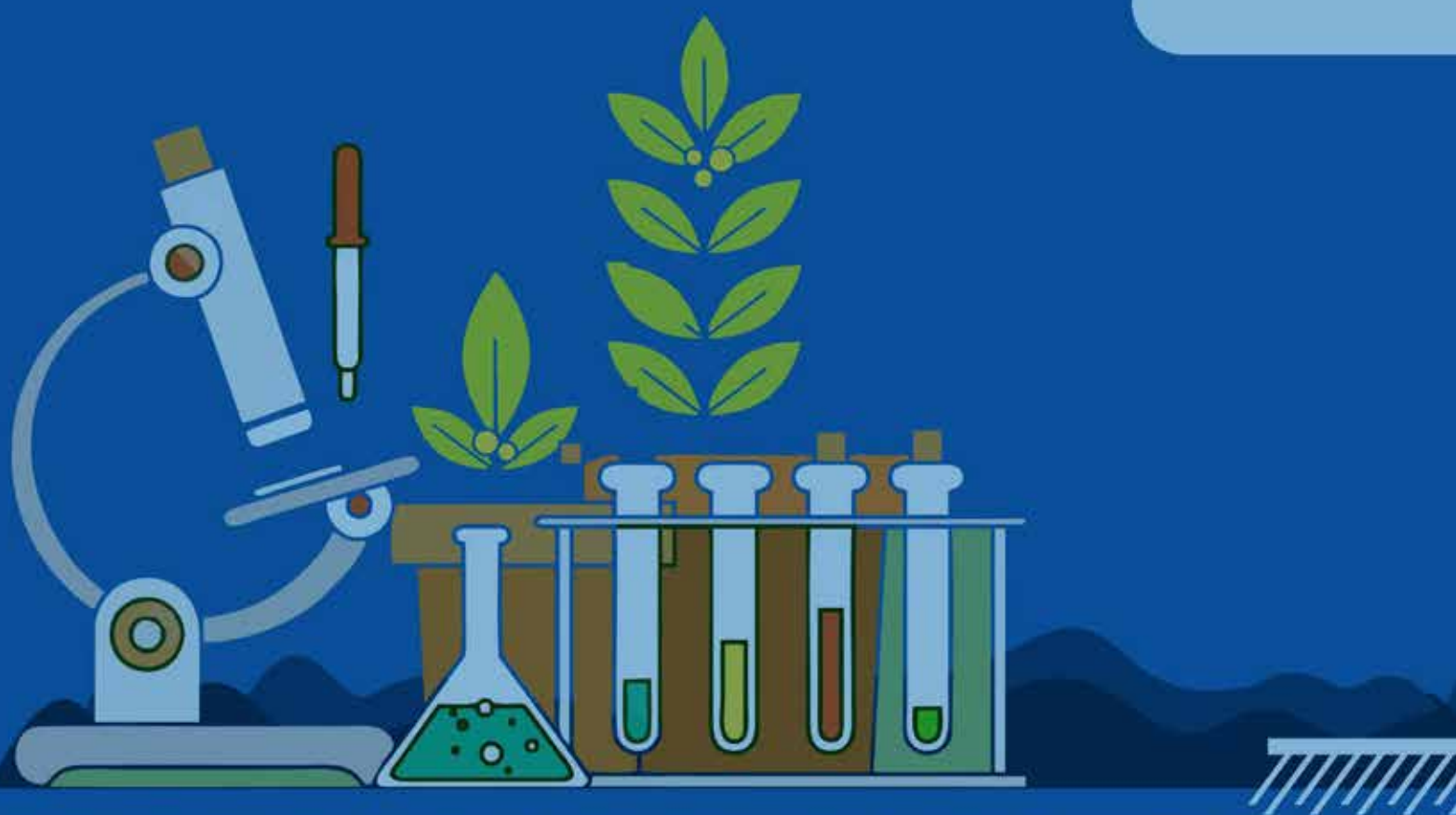
Organic Products

Primary Nutrients

Micro
Nutrients

Specialty
Fertilisers

Retail through Company outlets, Dealers and Retailers



Agri Business - Key Highlights

1

Integrated manufacturing facilities and long term tie-ups for raw material sourcing

2

Diverse product portfolio which caters to varied needs of the farmers

3

Well-maintained relationships with farmers

4

Extensive marketing and distribution network in India

5

Strong parentage combined with highly experienced leadership team



the Group markets a comprehensive range of bulk fertilisers in the phosphatics and complex fertiliser (NP, NPK) categories as well as urea, and has a substantial presence in speciality (WSF) fertilisers, SSP, hybrid seeds, pesticides for crop protection and other chemicals and agri inputs.

Along with associate company, Chambal Fertilisers, which Zuari promoted in the early 90s, the fertiliser companies of the Adventz Group, namely Zuari Agro Chemicals, (ZACL) Paradeep Phosphates (PPL), Mangalore Chemicals and Fertilisers (MCFL), Zuari Speciality Fertilisers (ZSF) and Zuari Fertilisers and Chemicals (ZFCL) have formidable pan India reach and brand presence, with iconic brands like Jai Kisaan, Navratna and Mangala, which enjoy huge customer preference in their respective marketing areas. Adventz is also the leader in water soluble fertilisers (WSF), with the largest market share. WSF products are manufactured at Zuari Speciality Fertilisers at Baramati and at MCFL, Mangalore.

With major brown field expansion of capacities and debottlenecking projects completed recently, including expansion of phosphatic fertiliser capacity in Goa to 9.5 lac metric tons per annum, the commissioning of a 200,000 ton capacity SSP (Single Super Phosphate) plant at Mahad, Maharashtra and major expansion of capacities in sulphuric acid and phosphatic acid production at Paradeep Phosphates, the plants are rejuvenated and production has become highly flexible. Higher grade of phosphatics ensure that the farmer has an entire basket of options for crop-specific nutrient solutions, tailored to his requirements.





Gobind Sugar, one of the earliest companies in the Group has also taken admirable measures to renew itself by increasing cane crushing capacity to 10,000 tonnes per day and has effectively converted to green energy production through a 30 MW bagasse-based cogeneration plant.

The recent acquisition of MCFL, a subsidiary of Zuari Agro has significantly improved the Adventz market reach in peninsular India, making it a leading player in that market.

While the Group has access to ports in several locations such as Goa and Paradeep, MCFL's unique port based location at Mangalore has also helped the Group to handle traded fertilisers more efficiently in Southern India which is its major market.



As India continues to be a net importer of fertilisers, to ensure food security for the nation, Adventz is creating a sizeable import hub at Mangalore, augmenting infrastructure not only to facilitate better trading but also bring down import and holding costs effectively and substantially.

As Adventz marches towards the goal of unified branding of its products pan India, for its agri business, it has merged marketing and sales functions with an integrated marketing and supply chain set-up, operating from Pune and the corporate office at Gurgaon. This has led to much greater cohesion and control and has given an added filip to the sales thrust of the Group.

In a major step forward in backward integration, Zuari Agro acquired 30% equity stake in Fosfatos del Pacifico (Fospac), through MCA Phosphates Pte Ltd., its Singapore based joint venture with Mitsubishi Corporation. Additionally, the Zuari- Mitsubishi combine has entered into an off-take agreement with Fospac of Peru to purchase the entire production of concentrated



rock phosphate after meeting local demand, if any, for a minimum term of 20 years.

Adventz is also eyeing manufacturing overseas, with a definitive agreement with Ras Al Khaimah Maritime City to set up a one million tonne integrated phosphatic facility in the UAE with GCC collaboration.

Adventz is rapidly transforming its core fertiliser operations to become an integrated agricultural services provider. In this new and improved avatar, Adventz is going beyond conventional manufacturing, packaging its services for all farmer requirements, Adventz is making huge volumes of nutrient-rich fertilisers available in the market place through securing assets and long-term sourcing arrangements for traded fertilisers internationally, to become one of the country's largest importers of fertilisers. Traded fertilisers have not only boosted volumes in the market, but also given the Group's profitability a big filip.



One of the subsidiary companies of the Group, Zuari Fertilisers & Chemicals Limited, has recently commissioned a 600 MTPD Granulated Single Super Phosphate plant at MIDC, Mahad, in the Konkan region of Maharashtra. Single Super Phosphate (SSP) is a chemical fertiliser which contains phosphorus as a major plant nutrient. It is a competitively priced product and contains many vital micro nutrients like calcium, magnesium, iron, aluminium, sulphur and gypsum. With an objective of increasing agricultural productivity, usage of SSP fertilisers needs to be enhanced along with use of Urea, DAP and NPK fertilisers.

Our agri business is constantly developing its capabilities to improve its industrial offerings and maintain its position as a market leader; the commissioning of this manufacturing unit in Mahad, enables it to provide an enhanced range of farming solutions by further complementing its product range.





India's economy is heavily reliant on its agricultural output. The demand for effective and affordable fertilisers is enormous. Adventz has fertiliser marketing offices spread all over India with wholesalers and retailers in Goa, Maharashtra, Andhra Pradesh, Telangana, Karnataka, Tamil Nadu, Uttar Pradesh, Odisha, West Bengal, Chhattisgarh, Jharkhand and Madhya Pradesh. It has a pan-India distribution network of 6,000 dealers and sub-dealers and 34,000 retail points with access to more than 24 million farmers.



In the service of farmers

Adventz seeks to facilitate farming and farmers, guiding them through innovative, scientific agricultural practices that help in improving crop yields.

The Group has set up agricultural development laboratories and toll-free help-lines, conducted training programmes and pioneered agri-demonstrations for the farmer. An educated farmer is the first step towards bettering the quality of rural life. We have even adopted villages as part of the rural action scheme, ensuring that the community benefits.

Adventz is committed to the sustainable development of the farmers and has a clear roadmap for their further growth. Most of the agri-technologies evolved during recent times facilitate small land holders to cultivate more effectively. In Goa, Adventz has introduced latest innovations at the farm level in a systematic manner through its Goa Agricultural Initiative (GAIN). The project aims to help the practicing farmers as well as those who want to start afresh.

'Hello Jai Kisaan'

The 'Hello Jai Kisaan' toll free line, established in Pune, Bangalore, Tirupati and Goa, allows farmers to resolve their queries, by a simple phone call. The 'Hello Jai Kisaan', toll free lines, are manned by agri-experts who are well equipped in advising farmers on scientific agriculture. Farmers across the state can avail of this service by phoning in, to resolve their queries. This service aims at providing on-the-spot solutions to farmers. An added bonus of this service is, that the 'Jai Kisaan Krishi Salahkar', (trained field workers), working in the fields alongside the farmer, can avail of expert help whenever required.





Jai Kisaan Junction

One Stop Shop for Farm Support Services

In its endeavor to be a holistic agriculture solutions provider, Adventz has introduced its own retail chain of agribusiness hubs, under the brand name 'Jai Kisaan Junction' as a one stop agri shop, that helps to ensure that Indian farmers grow high quality products. This chain serves farmers by facilitating all their agricultural needs and provides free agricultural consultancy services, ranging from sowing to harvesting of crops. Through this unique initiative the Group not only provides specialised agri inputs to farmers but also business opportunities to rural youth as well as gainful employment to agriculture graduates.

Over one hundred of these stores in the agri-marketing areas of Maharashtra, Karnataka, Goa and Andhra Pradesh provide superior farmer extension services in order to enhance the ability of farmers to take the right decisions towards productivity and quality. Besides having the entire range of agri-inputs on display, the junctions are equipped with internet supported audio-visual aids which display material on scientific crop management practices. The stores also provide a platform for idea-sharing opportunities to share knowledge about new age farming cultivation practices.





Agri Innovation Centre

Maximizing farm yields

Land is a shrinking resource in agriculture. While availability of land for agriculture is reducing, the demand for food grains is increasing day by day. The country's food grain requirement is projected to grow to 340 million tonnes by 2020 from the current level of 240 million tonnes. This need has to be met through higher yields per unit of land, water, energy and time. This is possible only by adopting precision agricultural techniques, aiming at target yields that are in line with advanced countries like Israel.

A radical change in extension education and transfer of technology to farmers is needed to meet this goal. The methodology of harvesting targeted yields through precision agriculture, needs to be practically demonstrated to farmers on a model farm. Adventz has made bold strides in this direction by establishing a state-of-the-art Agri Innovation Centre at Lamboti, near Solapur in Maharashtra.

This Agri Innovation Centre comprises 104 acres of land, well suited for cultivating various crops. It has a well laid out irrigation system, emulating the latest advances in drip irrigation from Israel, which can meet the water requirement almost throughout the year. The standing crops are pomegranate, mango, sapota, sugarcane and banana. Regular demonstrations for field crops such as wheat, paddy, jowar, maize, redgram, vegetables etc, besides horticultural crops, showcase precision agriculture techniques to farmers. Over 10,000 farmers have visited this centre since inception. A residential 'training centre' and state-of-art soil testing laboratory are also under commissioning.





The Power of Shared Vision

Integrated supply chain and marketing network

- The coming together of three major brands of the Group, namely - Jai Kisaan, Navratna and Mangala - has paved the way for a pan-India presence.
- Our business strategy is to synergise people, process, market reach & relationships to strengthen our consumer connect by offering Integrated Agri Solutions.



INTEGRATED POWER

- Jai Kisaan & Navratna
- Jai Kisaan & Mangala

PLANTS

- Paradeep Phosphates Ltd.
- Zuari Agro Chemicals Ltd.
- Mangalore Chemicals and Fertilizers Ltd.





Engineering

Adventz is playing a transformational role in the critical nation-building process with its extensive industrial and process engineering capabilities. These capabilities are represented by Adventz Group companies that are combining cutting-edge technology and new-age skills. Together, the Adventz Group businesses are taking India from forward to fast forward.

Railway Wagons • Track & Signalling • Wagon Leasing
• Coaches • Railway Components • Project Management



Engineering

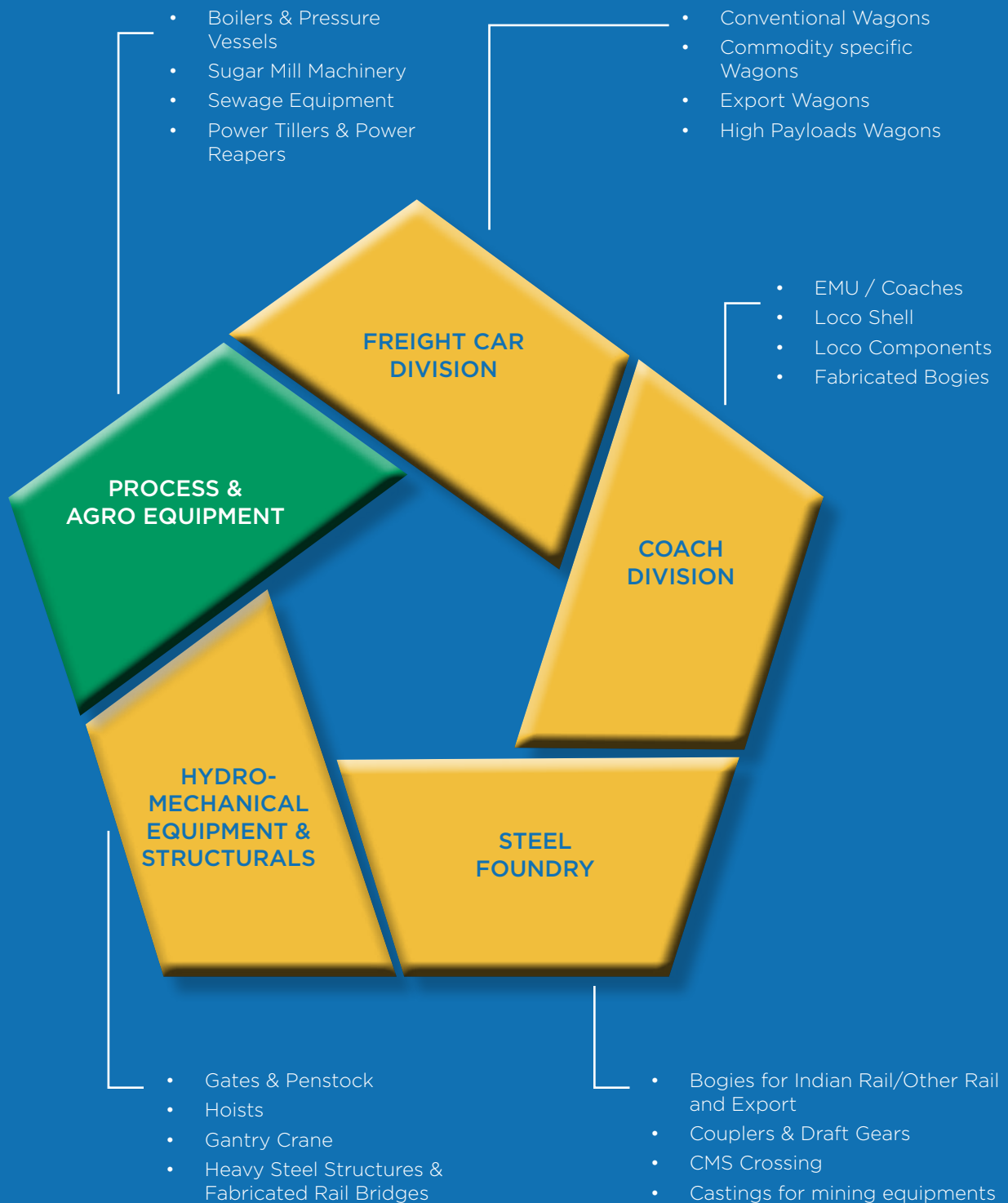
The Adventz Group has a cherished lineage as an engineering power house, going back many decades. The Group's resplendent legacy has now been renewed and re-energised many times over.



The Adventz Group has a cherished lineage as an engineering power house, going back many decades, to the founding of the legendary industry major Texmaco Ltd. in 1939.

Today the Group's resplendent legacy has been renewed and re-energised many times over by a formidable clutch of engineering companies led by Texmaco Rail and Engineering Ltd., (Tex Rail), the demerged engineering

TexRail- Key Business Segments



Kalindee Rail- Key Business Segments

TRACK LINKING

Largest Private sector player in ballastless track

- Gauge Conversation
- New Line & Siding Line
- Installations of Points & Crossings
- Yard Remodeling and Ballastless Track

CIVIL & STRUCTURES

- Major Bridges
- Minor Bridges/ Culverts
- Station Buildings
- Embankment & Earthwork

SIGNALING

Largest Private sector turnkey player with capability to integrate products from multiple sources

- Conventional/ Color Light/ Yard/ Multi Aspect Signaling
- Electronic Interlocking/ Level Crossing Interlocking
- Axle Counters/ Audio Frequency Track Circuit

TELECOMMUNI- CATION AND AFC

- Underground Copper Cable
- Underground OFC System
- Microwave/ UHF Radio Towers
- Complete AFC system installation including TOM, Contactless smart card Ticket readers

and steel foundry entity of erstwhile Texmaco Ltd. Tex Rail today is a total rail solutions provider and the country's largest freight wagon manufacturer. The Adventz Group's other engineering entities include Simon India Ltd., Kalindee Rail Nirman (Engineers) Ltd., which is now a part of Tex Rail and Bright Power Projects Ltd., a recently acquired railway electrification major. Tex Rail has also forged unique partnerships to explore opportunities in rolling stock and refurbishment, with renowned international corporations. It is partnering M/s Hitachi of Japan for executing the country's largest ever signaling and telecommunications contract for the Eastern 'Dedicated Freight Corridor' project of Indian Railways. It also has front line joint ventures with Touax Rail of France for Touax Texmaco Rail Car Leasing Private Limited and with the world famous Wabtec Corporation of USA for Wabtec Texmaco Rail Private Limited. This joint venture company will offer Wabtec's globally competitive freight and friction products to Indian Railways.

In a major diversification into rail coach manufacturing, Tex Rail has set up a modern manufacturing facility at its Sodepur works with technical support from Kawasaki, Japan, for the manufacture of EMU (Electrical Multiple Units) coaches as well as Metro coaches. The first EMU rake from this facility joined the Indian Railways fleet in 2015.





With five manufacturing units extending over 170 acres, Tex Rail is one of the leading mechanical and structural engineering companies in India.

The Company manufactures a diverse range of products and is the largest manufacturer of railway freight cars, and hydro-mechanical equipment in the country. Its product range also extends to pressure vessels, road repairing and agricultural machinery, etc. It has entered into technical collaboration with renowned multinationals for further developing and expanding its product portfolio.

With its strong credentials as the largest freight car manufacturer in India, of modern hi-tech stainless steel cars, one out of every four freight cars on Indian Railways network is rolled out from Tex Rail Works. Tex Rail freight cars, serve a host of core industries like Cement, Steel, Defence, Fertiliser, Oil, Aluminium, Thermal Power Projects, Chemical Plants, etc. These include custom-built special purpose freight cars for movement of large oversized



consignments with individual weights upto 250 tonnes. It also manufactures two-tier rakes for multinational auto manufacturers, and has recently taken up production of 'loco shells' for electric locomotives, outsourced by the Indian Railways. Besides the domestic market, Texmaco has also made a significant thrust in overseas markets, exporting state-of-art wagons and bogies to Queensland Rail, Bangladesh Rail, Kazakh Rail and to several countries in East Africa. Multiple awards bear testimony to its successful achievements in national and international projects financed by World Bank, ADB and other multilateral funding Agencies.

Tex Rail is also an outstanding name in the field of design, fabrication, supply, erection, and commissioning of hydro-mechanical equipment for mega hydro-power projects. It is also well-known for fabrication of heavy steel structures

for thermal stations, fly-overs, railway bridges, cranes and equipment for steel plants, naval ship structures for the Indian Navy etc.

The Steel Foundry of the Company is the largest in the Country with a capacity of 30,000 tonnes of quality castings per year. It has a state-of-the-art facility set up by the world renowned Ms. Kunkel Wagner of Germany. The Foundry has earned the distinction of obtaining certification from AAR (Association of American Railroads), making it the only foundry in India qualified to export railway castings to the North American market.

Tex Rail has set up, with the help of leading Australian rail solutions major, M/s UGL Rail Services Ltd., a state-of-the-art manufacturing facility at its premises in Kolkata, for the design, manufacture and supply of locomotive bogies, frames and platforms as well as wagons and wagon components for the export market. The cutting edge facility, Texmaco Hi-tech, was commissioned in 2013 with best-in-class equipment such as laser cutters, plasma cutters, robots and cranes.



Texmaco Hi-tech manufactures rail bogie frames and platforms, wagon components, and locomotive components for the Indian and overseas markets as well as related rolling stock maintenance and refurbishment opportunities.

Texmaco Hi-tech has now taken the initiative to develop markets for hi-tech, hi-precision components for the US and European markets with railway equipment manufacturers like GE, Alstom, Harsco, ZF etc. It has also successfully got trial orders from Indian Railways. Texmaco's wide range of sophisticated rail products and components will gain added currency in near future with the upcoming dedicated freight corridor projects of Indian Railways, which will provide a huge market.

Today a part of Texmaco Rail, the acquisition of Kalindee Rail has given Texmaco an unrivalled edge, making its products as well as services combine. The company was founded in 1976 as a partnership firm for execution of signaling contracts. It became a public listed company in 1984 and later diversified into execution of ballasted trackwork, optic fiber communication, automatic fare collection system for metros, ballastless trackwork for metros and electronic interlocking.





Bright Power Projects Limited, a major entity in the field of railway electrification in India is a recent acquisition and will help further Texmaco's objective of offering complete solutions to the railways, including track laying, signaling and electrification in addition to state-of-the-art rolling stock. With the rapid electrification thrust of Indian Railways, Bright Power is well positioned to help consolidate the Group's leading position in this critical area.

Simon India Limited (SIL), a wholly-owned subsidiary of Zuari Global Limited, offers technical consultancy, project management and contracting services to chemical, fertiliser, oil & gas, petrochemical, power and other infrastructure projects. SIL's workforce is made up of highly experienced professionals from a range of process industries.

The areas of expertise include: pre-project feasibility studies, detailed plant engineering, plant revamps, retrofits, emissions & pollution abatement, cross-country pipe-lines, petroleum, chemical storages and specialized technical services as well as access to process technology for oil & gas processing, sulphuric & phosphoric acid production, chlor-alkali, ammonia, urea, NPK, DAP, speciality fine chemicals and non-ferrous metallurgy.

SIL has executed large-scale projects for premier clients in sectors such as Refineries, Petrochemicals, Oil & Gas, Fertilisers and Chemicals, both in India and overseas.



3

Infrastructure

Recognizing real estate development as a core growth area and a significant game changer in improving the quality of life, Adventz is effecting a welcome wave of transformation across this vital domain.

Infrastructure

Recognizing real estate development as a core growth area and a significant game changer in improving the quality of life, Adventz is effecting a welcome wave of transformation across this vital domain.



Zuari Infraworld India Limited, a wholly-owned subsidiary of Zuari Global Ltd., flagship of the Adventz Group and Texmaco Infrastructure and Holdings Ltd. represent the Group's foray into the realty sector and is an expression of its whole hearted commitment to a better life for the community. Leveraging the Group's formidable technical expertise, highly skilled teams of professionals, strategic global alliances and long experience in delivering quality projects on time, Adventz today, is engaged in adding value to the extensive property holdings of the Group through front line projects, pan India and abroad.



With an impressive land bank spread through select urban agglomerates, the Adventz Group's, ambitious plans include targeting a spectrum of customer segments across the value chain, from HNI to economy, with a variety of high-end and value products. Projects under development total a massive 20 million sq. ft of built up space.

Adventz is developing residential cum commercial integrated townships and gated communities, in Mysore, Goa, Vrindavan and Delhi, as well as in the premier real estate market of Dubai. These projects are high-end, mixed use projects, of over a million or more square feet each. The 'Adventz Down Town' project, a joint venture with DAS Holdings of Abu Dhabi, in Downtown Dubai, adjoining the land mark Burj Khalifa, promises to be an iconic residential development incorporating best in class features. Products on offer in the various other ZILL projects include high-end and economy villas, high-rise garden apartments, row-houses etc. along with a complement of related developments including hospitality and sporting establishments, club houses, hotels & resorts, signature golf courses, swimming pools and other facilities.



The first such project, now nearing completion is the 'Zuari Garden City', a gated 73 acre development of villas, town houses and high-rise apartments, near fabled Mysore. The US \$ 100 million project, with its first two phases handed over in March 2014, is redefining lifestyles and promoting environment-friendly living with a focus on land-mark green initiatives. State-of-the-art facilities like club house, sports complex, retail outlets, school and ample green spaces create a self-sustaining habitat. One hundred high-rise garden apartments are now under construction. The township's landscaped green acres have already won approbation in the shape of awards from CREDAI and the Mysore Urban Development Department.

Adventz is also developing an ambitious high-rise structure at Vasant Kunj, New Delhi to house a Museum, while its joint development, river bank project at Vrindavan called 'Mayavan' is nearing completion. The Group has planned for a two million sq. ft. project in Kamla Nagar, New Delhi as well as an integrated golf course cum branded residences project including a convention centre, hotel, retail and hospital development over a 500 acre plot in Goa with a built up area of over 7 million sq. ft.



‘Adventz Down Town’

Iconic Real Estate Development in Dubai

The first overseas real estate flagship project under the Adventz Group is ‘Adventz Down Town’, an iconic 328 meter tall residential tower with 68 floors. Located in the prime downtown area of Dubai, it will be a land mark project next to world class developments like Burj-Khalifa, Fountain, Dubai Mall and the Address Hotels.

The tower will have 173 luxurious apartments with features like independent terrace gardens, plunge pools, private lift lobby and with uninterrupted views of the Burj-Khalifa boulevard. The interiors of the apartments will meet international standards with niche quality, handpicked material. On board are renowned consultants like LW Design House, Aurecon and WME Consultants.

The unique design and architecture of the building has already won awards from “International Property awards” 2015-16 in the categories:

- Best Architecture, Multiple Residence Dubai
- Best Architecture, Multiple Residence Arabia
- Best International Architecture, Multiple Residence

Construction is scheduled to start in the first half of 2016 and will be ready for occupation before Dubai Expo 2020.





Green Power

An ambitious clean and green energy programme, designed to mainstream the Adventz Group with the national thrust towards alternative energy production, found its cornerstone recently in the commissioning of a 30MW, bagasse based cogeneration plant at Gobind Sugar Mills Limited (GSML), a part of the Group, in the Lakhimpur Kheri district of Uttar Pradesh. Bagasse is a by product of sugar cane crushing and the mill generates significant quantities of this organic waste from its 10000 tonnes per day cane crushing operations.

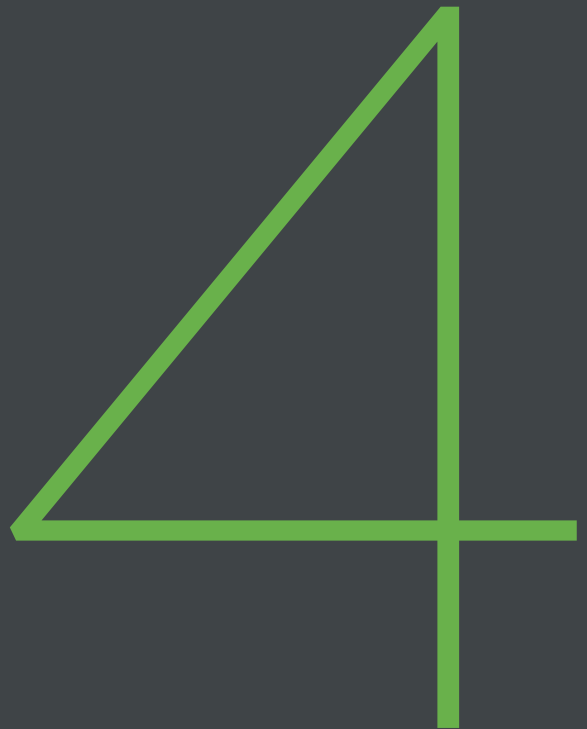
Bagasse based cogeneration, for export of surplus power to the Grid has gained wide acceptability both in India and abroad. With major advantages like on-site availability, reduced transmission losses and eco-friendly power, sugar mills can become supplementary power companies towards achieving energy self-reliance in India. Indeed with India's vast sugar industry, its aggregate, bagasse-based cogeneration capacity, far exceeds the combined cogeneration capacity in the rest of the world.

With the successful commissioning of the unit and commencement of supply to the Uttar Pradesh grid, the Group has now turned towards another readily available eco-friendly energy source, to reduce dependence on fossil fuels. Adventz is well on way to installing a 60 kilo litre per day, ethanol distillery at its sugar mill to effectively convert molasses, another by product, to an eco-friendly gasoline substitute. Ethanol is blended with gasoline in various proportions to reduce dependence on petroleum fuels.

In order to achieve a focused thrust in its alternative energy operations, the Group has recently registered an infrastructure and energy subsidiary called 'Zuari Sugar and Power Limited', which is expected to achieve a substantial turnover in the near future.







Lifestyle

RTA Furniture and world class fittings and hardware in
tune with consumer aspirations

RTA Furniture • Hardware & Fittings • Design • e-commerce

Lifestyle

RTA Furniture and world-class fittings and hardware in tune with consumer aspirations





Adventz has ventured into RTA Furniture through Indian Furniture Products Limited (IFPL), a pioneering venture and the largest producer and distributor of world-class furniture in India. It has the distinction of having created Style Spa, the largest company-owned, furniture retail chain in India. IFPL manufactures 2,00,000 units per annum with the most sophisticated, European, ready-to-assemble technology, in an ISO 9001-2000 state-of-the-art, fully automated plant at Kakkalur near Chennai. The furniture is crafted on CNC controlled automated machinery.





IFPL's own furniture brand 'Zuari' is sold through a mammoth network of 60 distributors and 900 dealerships spread across India. The exquisite furniture has also been exported to Afghanistan, Bangladesh, Belgium, Dubai, France, Germany, Madagascar, Maldives, Muscat, Sharjah, Sri Lanka, UK, USA, Fiji and Mauritius.

The product range includes home furniture such as living room and bedroom products, dressing table, computer table and utility products. Office furniture in several designs is also available. IFPL has the capability to offer complete one-stop shop, turnkey solutions to corporate and educational institutions. IFPL's sourcing base include several renowned manufacturers from Italy, France, China and Malaysia.

Product portfolio updating is the most important aspect in the lifestyle retail business and IFPL has been striving continuously to achieve this objective. Several new designs have already been introduced in the market such as Cove, Choco, and Crackle range of bedroom furniture and many more are in the development and prototype stage.

The advent of e-commerce as an integral element to complement 'brick and mortar', retail business, has prompted IFPL to venture out into this new arena. Exciting plans are underway to utilize the opportunity with a view to turn the company into profitable and more investor-friendly business.

IFPL has also bagged the prestigious 'kitchen supply and installation' contract from 'Al Shafar National Contracting' in Dubai for supply and installation of 236 kitchens in 'Bermuda Views', a landmark residential building in Dubai Sports City. With the completion of work in 'Bermuda Views' last year. IFPL has bagged another kitchen contract for 'Eagle Heights' also located in Dubai's picturesque Sports City.



World Class Furniture Fittings & Hardware

Adventz today, is the Indian market leader in the area of furniture fittings and hardware with a range of over 15000 high quality products, thanks to its successful joint venture, Hettich India (HIN), with the world renowned Hettich Group which was founded in Germany in 1888. Hettich is a German multinational and a leading manufacturer of furniture fittings & hardware. The wealth of expertise and experience of Adventz Group in successfully running diverse businesses in India, has helped HIN to become the most successful operation of Hettich worldwide. Hettich India has a complete range of fittings and hardware, to cater to all the three segments of the furniture space, viz., office, residential and kitchen & bath.

Hettich India also controls Hettich operations in all the SAARC countries namely Sri Lanka, Bangladesh, Nepal & Maldives etc. and is working towards making Hettich the No.1 furniture fittings & hardware brand, in these countries as well. With 'technology for furniture' -as its passion, the Hettich brand is synonymous with quality, innovation, reliability and customer focus the world over.

Hettich India has its manufacturing foot print in Vadodara, Gujarat. Two state-of-the-art plants, one for 'decorative wire products', and another for 'telescopic ball bearing slides'. The product range includes decorative coated wire products to cater to house hold needs such as living room, kitchen, bath, bed room, storage etc. Telescopic ball bearing slides, find their place in house hold, office



furnitures and white goods industries. The technology used is state-of-the-art stainless steel wire processing, forming, bending, joining and surface treatment technology from Germany as well as state-of-the-art technology for steel cold forming, high speed punching, surface treatment, high speed assembly. Hettich India has in-house integrated R&D facilities.

Hettich India has a pan-India presence with a large customer base that consists of large and small dealers, furniture manufacturers, kitchen manufacturers and contractors. It has six registered offices and 'Application Display Centres' in all metros across the country. Hettich India Private Limited develops and produces a vast range of fittings - from drawer and runner systems to hinges, decorative handles as well as folding and sliding-door hardware. Hettich India has pioneered the concept of Application Centres in the country, to give a 'touch and feel' experience to the prospective buyer as well as an option to select the right product matching his budget and needs.





With an objective to provide exceptional experience to visitors and give them unparalleled access to class, design and quality under one roof, Hettich India has unveiled a 'state-of-the-art innovation centre' at Cubbon Road, Bengaluru. This innovation centre is the first of its kind in the world and showcases the most premium products and applications from the Hettich portfolio.

Hettich India is also foraying into the e-furniture space, with a brand new venture which promises to be India's largest digital furniture market, retailing a wide variety of products to a huge consumer base. The company has also ventured in to interiors design to optimize home and office spaces with its avant garde hardware products.

The Adventz joint venture, has enlarged its presence to the Middle East as well. Hettich Middle East (HME) operations were set up in October, 2011, to target the markets in UAE, Oman, Qatar, Bahrain, Saudi Arabia, Kuwait, Jordan, Yemen, Jordan, Syria and Lebanon, besides Egypt in North Africa. During the last five years of operations, the business has trebled and the reach of Hettich Middle East is now wide spread in the region. Apart from its main office in Dubai, HME has set up its first application centre in Dubai to showcase its latest products, More application centres will follow in Jeddah, Dammam, Doha and Cairo.





Towards Community Uplift

The Adventz Group has, since inception, always laid great emphasis on its responsibilities, not only to the wellbeing of its stakeholders, but also to the larger communities in the areas in which its companies operate. 'Nurturing Life' is the credo of its multi-faceted sustainability initiatives, through the land-mark Adventz Foundation.

Health • Education • Hygiene • Environment



Good Corporate Citizenship through Exemplary Corporate Social Responsibility

The Adventz Group, through the 'Adventz Foundation' takes its role of good corporate citizenship very seriously indeed. The Group firmly believes in the principle that organized industry has a duty to society and responsibility to the community which goes far beyond its immediate business and commercial interests. Contributing to social progress and stability is of primary importance to us. We are focused towards the welfare, not only of our own employees and their families, but towards the welfare and uplift of the larger community in our areas of operations and actively share in the responsibility to upgrade the quality of life in the neighborhood. With the Group's unparalleled social commitment I am happy to report that we are setting benchmarks in this vital activity.

Saroj Kumar Poddar



Front Line Initiatives

Family Health Camps • Animal Health Camps
• Vocational Training • Flood Relief • Agri Training
• Horticulture Development • Mushroom Cultivation
• Rural School Renovation • Scholarships for Rural Youth
• Rural Toilets • Bore Well Recharging
• Afforestation • Floriculture • Youth Festivals

Organized industry represents rich pools of talent, technical expertise, trained manpower and many other resources which can be gainfully utilized for the greater public good. No entity can survive in isolation, divorced from its surrounds. Pockets of prosperity amidst poverty, can only lead to serious social discontent and malaise. While CSR does not have any ulterior motive, it is evident that business can ultimately only thrive and prosper in a vibrant society which provides customers, investment, future employees and so on.





Through the 'Adventz Foundation', Corporate Social Responsibility has come into its own as an intensive function of the Adventz Group's all round operations. Some of the leading members of the Group, such as Texmaco, Zuari, Paradeep Phosphates and several others, have taken the initiative, over the years to institute comprehensive programs, pan-India, towards primary and secondary education, scholarships, healthcare, sanitation, vocational training, rural uplift measures through agri-training and demo parks, water and soil conservation, extension training, transfer of technology to weaker sections such as marginal farmers, computer literacy and training, eye camps, blood donation, women's empowerment, tailoring classes, sports promotion, youth festivals, preferential employment to weaker and physically handicapped sections, and many more, to nurture and empower the communities in which they operate.





Unique initiatives include an extensive rural toilet building programme for individual households, through *shramdan* of the families being benefited and school toilet complexes targeted towards the girl child. Water and sanitation programmes also include building community bathrooms. These have not only brought immense relief to rural families, especially rural women but have helped to ensure that the girls go to school. A scholarship programme in Agriculture and Engineering, for deserving but indigent students have helped hundreds to obtain professional degrees. School tree plantation and proper waste management practices have created immense awareness for environment protection amongst young children and have also created lush pockets of greenery. Making modern technology available for community, orchid farming and floriculture has also provided sustenance to many among weaker sections.



Through its extensive and unprecedented range of CSR activities which is an intimate, continuous and holistic engagement with the entire community, the Adventz Foundation is playing a transformational role in this critical nation building process and has earned enormous goodwill in the areas of the Group's operations.

The Group is also heavily focused towards environment protection and greening the areas around its areas of operations, winning several international awards.

‘Youth for Tomorrow’ Festival

A major annual community outreach initiative, the Adventz ‘Youth for Tomorrow’ festival in Goa, is an expression of the Adventz Group’s commitment to the uplift of our youth. The Festival, which has ‘Envisioning Tomorrow’ as its principal theme, comprises Elocution and Singing competitions.

The ‘Youth for Tomorrow’ Festival was formulated with the sole purpose of inspiring young minds who are the future and imbue them with a sense of the exciting opportunities available to them in the fast transforming world of today. This first-of-a-kind annual initiative by the Group, which began in 2015, aims to provide a huge platform to promote beneficial inter-mingling of thoughts, ideas and experiences, among school students. This provides a perfect opportunity to build their self-confidence, effective communication abilities and leadership qualities as a means of creating a better tomorrow.

The initiative is now in its second year and has achieved wide popularity among school children in the state of Goa.



Adventz Group

AGRI-BUSINESS

- Zuari Agro Chemicals
- Paradeep Phosphates
- Mangalore Chemicals & Fertilisers
- Zuari Speciality Fertilisers
- Zuari Agri Sciences
- Zuari Maroc Phosphates
- Zuari Fertilisers & Chemicals
- Gobind Sugar Mills

ENGINEERING

- Texmaco Rail & Engineering
- Texmaco Hi-Tech
- Wabtec Texmaco
- Touax Texmaco Railcar Leasing
- Simon India
- Zuari Indian Oiltanking
- Kalindee Rail Nirman (Engineers)
- Bright Power

INFRASTRUCTURE

- Zuari Global
- Texmaco Infrastructure & Holdings
- Zuari Infraworld India

LIFESTYLE

- Indian Furniture Products
- Hettich India

SERVICES

- Lionel India
- Zuari Investments
- Adventz Finance
- Adventz Securities Enterprises
- Globex





Adventz Corporate Office

Global Business Park, Tower A, 5th Floor, Sector-26, MG Road, Gurgaon-122002, INDIA

Tel: +91 124 4827 800 | W: www.adventz.com