

Spillway Gates, Vishnuprayag H. E. Project, Uttarakhand

TEXMACO RAIL & ENGINEERING LTD.

**HYDRO-MECHANICAL EQUIPMENT AND
STEEL STRUCTURALS**

A SUCCESS STORY

ABOUT US

Texmaco Rail & Engineering Ltd (Texmaco), founded in 1939 by Late Dr. K.K.Birla, is a premiere multi-discipline, multi-unit engineering complex in Kolkata, with five factories situated on the northern fringes, about 11 KM from downtown, extending over 170 acre.

Our Company, a renowned market leader in Rail Freight Cars and Steel Castings, is also a leading player since mid 50's in designing, manufacturing, erection and commissioning Hydro-Mechanical Equipment for Hydel Power Plants, Industrial Steel Structures for Thermal Power Stations & Steel Plants, Flyovers and Bridges.

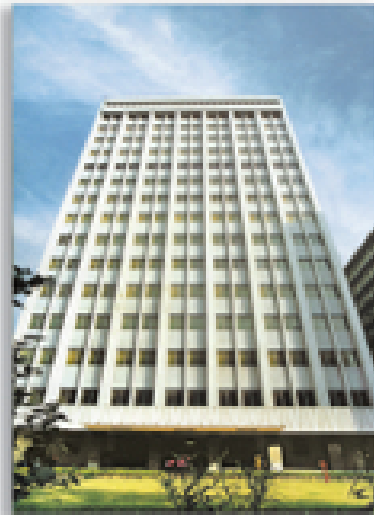
Texmaco has built its credentials over the years through numerous prestigious jobs in India and abroad in the field of Hydro-mechanical equipment, such as Gates, Penstocks, Hoists, Cranes, Trash Rack Cleaning Machine etc. for Dams, Barrages and Mega Power Stations from concept to commissioning. There is hardly any renowned

integrated scheme in the country where Texmaco has not made its silent but significant contribution to core infrastructure, power generation, irrigation, agriculture and flood control.

Overseas, Texmaco reached out to build Radial Gates for NKulla Falls Malawi, High Head Gates & Hydraulic Hoists for Wadighan Dam, Libya, High Head Gates, Penstocks for Tenom Pangli Power Project in Malaysia, Kaligandaki Project in Nepal, Tala Hydro Electric Project in Bhutan, and Purulia Pumped Storage Project in West Bengal.

In the field of Industrial Structural, Texmaco's impressive performance at Tunku Jafar Power Station in Malaysia, Kolaghat Power Station in West Bengal, Bokaro & other Steel Plants, has won it national & international recognition.

A host of Infrastructure Projects bear testimony to the company's engineering and manufacturing capabilities.



Corporate Office
Birla Building, Kolkata



Administrative Building
Birla House

Texmaco - An industry for industries.

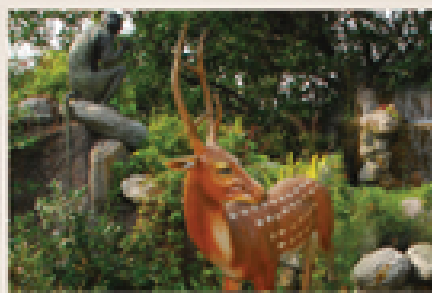
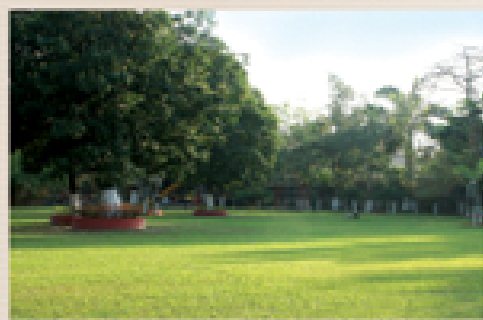


K. K. Birla Engineering Centre
Agartala Road

Ecological Balance



Greenery and waterbody
at works



Children Park, Texmaco Estate



At Texmaco, a clean and pollution-free atmosphere is of paramount importance. The Company cares to minimize the environmental impact of its operations. It has made a massive investment in greening the premises with plantation of trees, bushes, hedges, lush green parks, water-bodies and cascades, to make the workplace eco-friendly & relaxing for a work-life balance.

Hydro-Mechanical Eqpt.

Radial Gates



Hydraulic Hoist Operated High Head Spillway Gates.
1020 MW Tala H.E. Project, Bhutan



Hydraulic Hoist Operated Spillway Gates.
The largest in India and second largest in the World.
300 MW Chamera-II H.E. Project, Himachal Pradesh



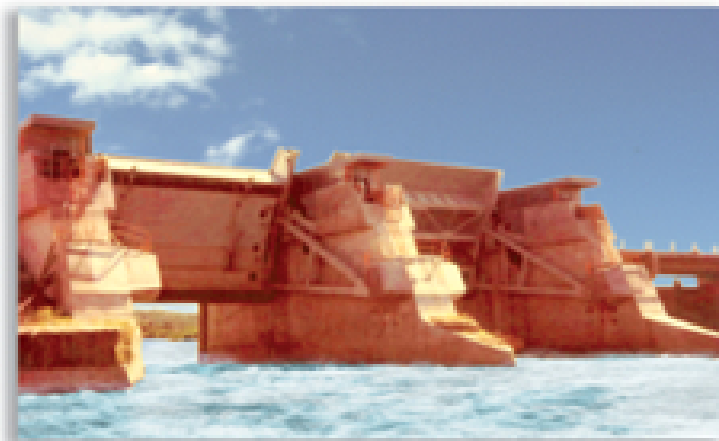
Hydraulic Hoist Operated High Head Spillway Gates.
510 MW Teesta-V H.E. Project, Sikkim



Rope Drum Hoist Operated Spillway Gates.
345 MW Salal H.E. Project, J & K



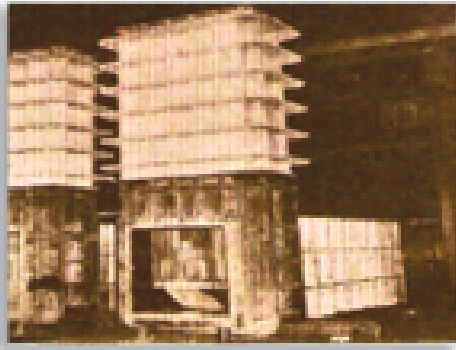
Rope Drum Hoist Operated Spillway Gates.
99 MW OBRA DAM, Uttar Pradesh



Hydraulic Hoist Operated Spillway Gates.
124 MW N'kula Falls, Malawi, Africa

Hydro-Mechanical Eqpt.

Vertical Gates



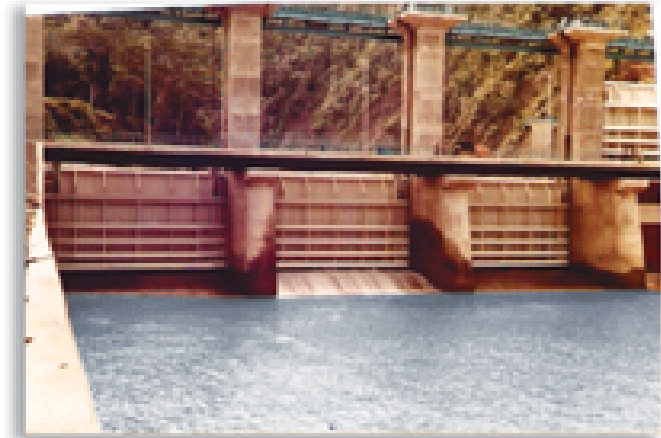
High Head Gates with Body Bonnet.
Wadi Ghan Dam, Libya



Vertical Lift Spillway Gates.
Galudih Barrage, Jharkhand



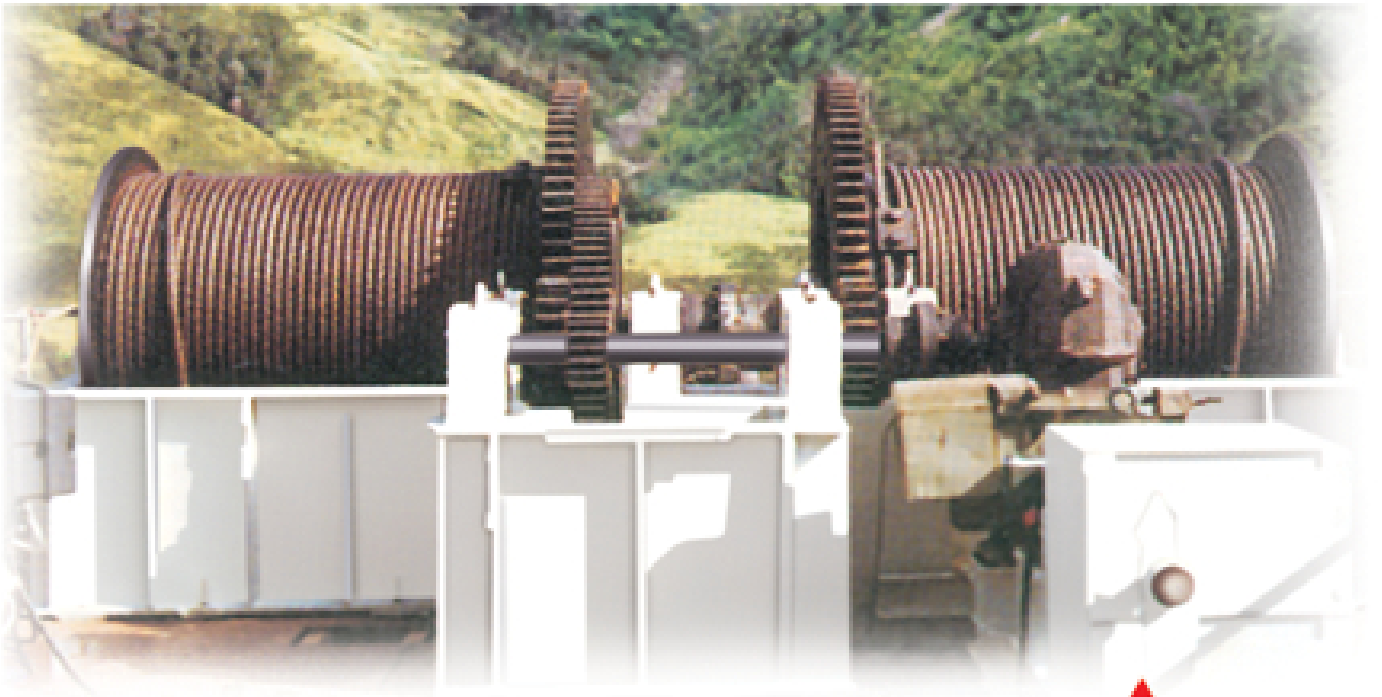
Teesta Low Dam Stage-III,
West Bengal



Tenom Pangl Power Project,
Malaysia



Vertical Lift Crest and Undersluice Gates.
Sone Barrage, Bihar



▲
60T Rope Hoist
Tenom Pangi Power Station, Malaysia



▲
230T Spillway Gantry Crane
Chamera-II - HP



▲
55 t. Gantry Crane-Tala, Bhutan



▲
Radial Traveling Hoist
Chamera-II - HP

Hydro-Mechanical Eqpt. Trash Racks & Trash Cleaning Machines



▲
Trash Cleaning Machine-Cum-Gantry Crane,
Teesta-V, Sikkim



▲
Trash Raking Machine
Tenom Pangli Power Project, Malaysia



▲
Trash Rack Screen
Chamera Stage-II, HP

Hydro-Mechanical Eqpt.
Penstock / Pressure Shaft Steel Liners, & Specials



Expansion Joint
Sewa II, H.E. Project, J & K



3-Piece Junction
Purulia Pumped Storage Project
West Bengal



Bifurcation
Ranganadi H.E. Project, Arunachal Pradesh



Surface Penstock
Sewa II, H.E. Project, J & K.



Rammam Penstock, West Bengal

Steel Structurals



Structural Steelwork
Flyover at A.J.C Bose Road, Kolkata, WB



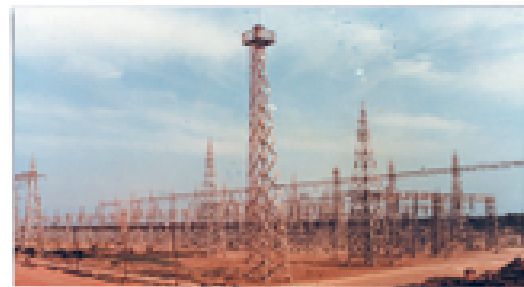
Rail Link Triangulated Bridge
Dhamra, Bhadrak, Orissa



Steel Trough Web Bridge,
Bangladesh Railway



Steelwork and Cladding
Tuanku Ja'far Thermal Power Station, Malaysia

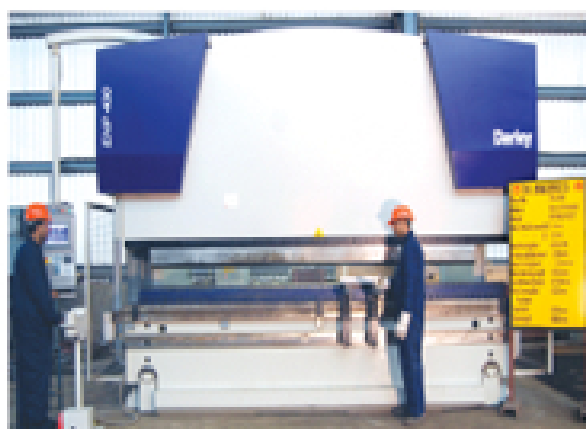


Galvanized Steel Structure
Thermal Power Project, Kolaghat, West Bengal



Hull Structure for Indian
Navy War Ship

Special Facilities



▲
CNC Press Brake(400T)-Machine



▲
Semi Automated Welding Machine



▲
End Dishing



▲
Stress Relieving Furnace



▲
C.N.C. Plasma Cutting Machine

Other Products



BCNR, Wagon Rake
(Made of Stainless Steel)



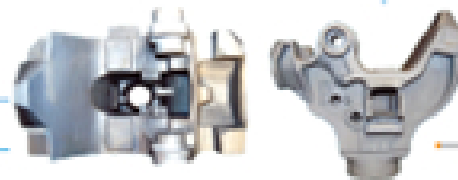
BTAP Wagon Rake
for Alumina



Electric Locomotive/Shunt
(3-phase WAG9)



High Speed
Cast Steel Bogie



Coach Coupler

Horton Spheres for ISRO



Oxygen Buffer Vessel



Power Tiller (Texmaco Dhanwan)



TEXMACO RAIL & ENGINEERING LTD.

Corporate Office:

Birla Building, 9/1 R. N. Mukherjee Road, Kolkata - 700 001

Ph: 2248 0135, 2213 1680

Works:

Agarpara ■ Belgharia ■ Sodepur ■ Panihati

Ph: 2541 1631 / 2569 1500

Branch Offices:

New Delhi ■ Mumbai ■ Chennai

Email: texmail@texmaco.in ■ Website: www.texmaco.in